



## Mullins Place, Clapham, SW4

3 bedroom flat - penthouse for sale

£650,000

Leasehold

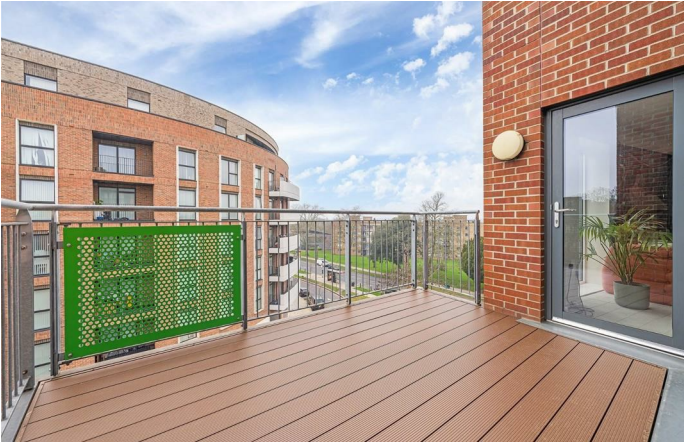
### Property Details

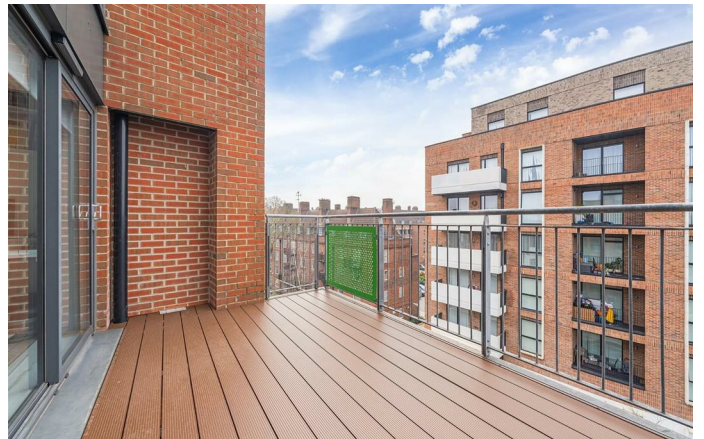
An exceptional three double bedroom, two bathroom penthouse apartment with a private South-facing balcony and a vast private terrace, set atop a contemporary building. Spanning over 1,000 square feet, this impressive home enjoys a rare layout where the reception and all three bedrooms have direct access to outside space, creating a seamless indoor-outdoor flow. The bright open-plan reception features plush grey carpets and near floor-to-ceiling windows and opens onto the South-facing balcony. To the rear, a stylish contemporary kitchen showcases striking emerald green cabinetry, sleek black worktops and fully integrated appliances, with space for dining beneath a pendant light. The decked balcony, accessed from both the reception and third bedroom, is ideal for al-fresco dining. The principal bedroom offers fitted wardrobes, an en-suite shower room and doors onto a vast terrace. Nearly ten metres long and also accessed from the second bedroom, the terrace provides privacy, rooftop views, paving and areas of faux turf. A third double bedroom and a second modern bathroom complete the home.

Council tax band D    EPC rating B (83)

### Features

- Penthouse apartment
- Three double bedrooms
- Two bathrooms
- South-facing private balcony plus a vast private terrace
- Contemporary building
- Over 1,000 square feet
- Gym and supermarket on the doorstep
- Clapham, Brixton and Balham all within walking distance
- Northern and Victoria lines plus extensive bus network

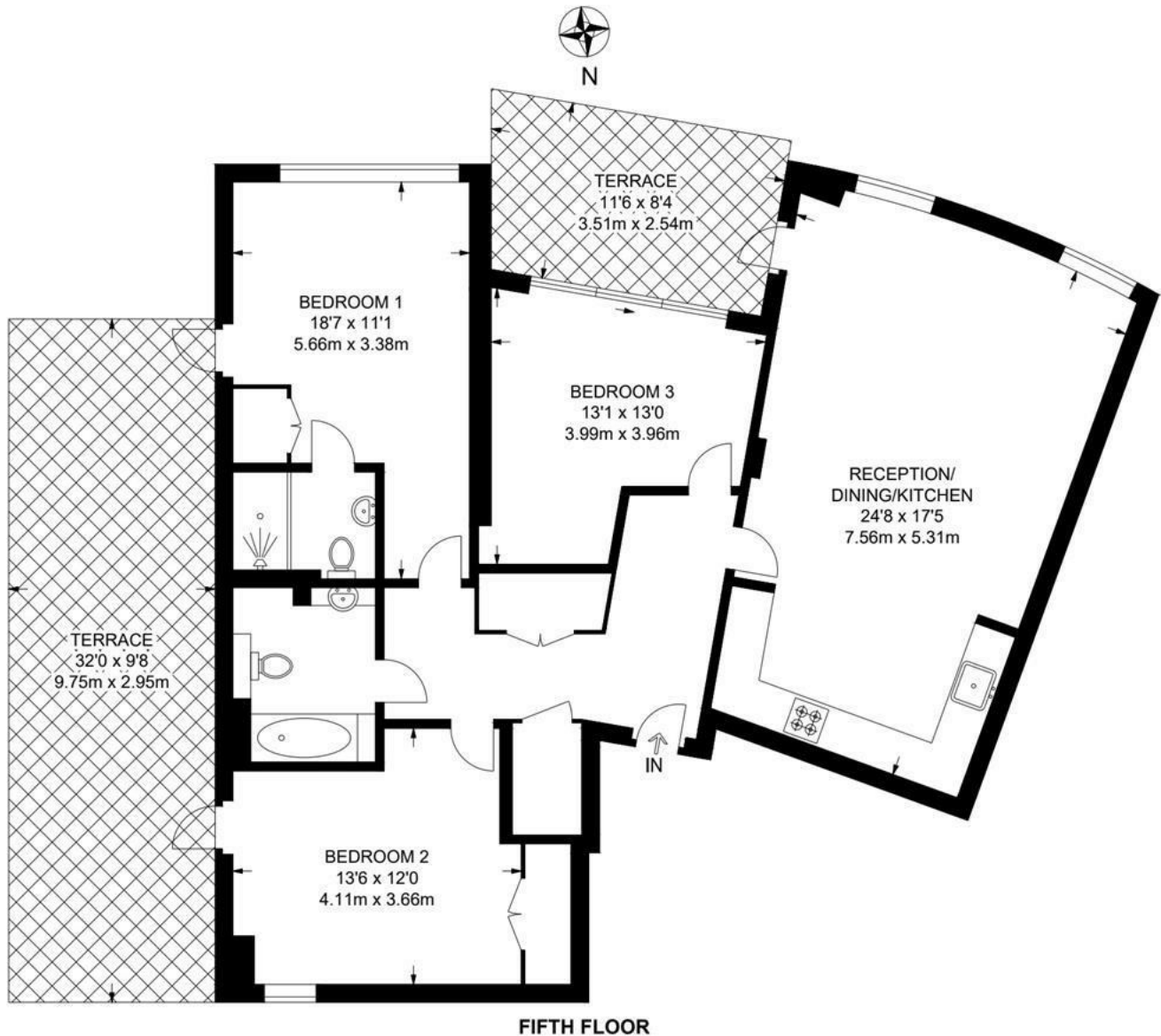




Mullins Place, Clapham, SW4

**Mullins Place, SW4**  
**3 Bedroom Flat**

APPROXIMATE GROSS INTERNAL AREA: **1098 SQ FT / 102 SQ M**



While we try our very best, floor plans are produced as a guide only and we take no responsibility for the precise accuracy with which any property is represented.

Mullins Place, Clapham, SW4

